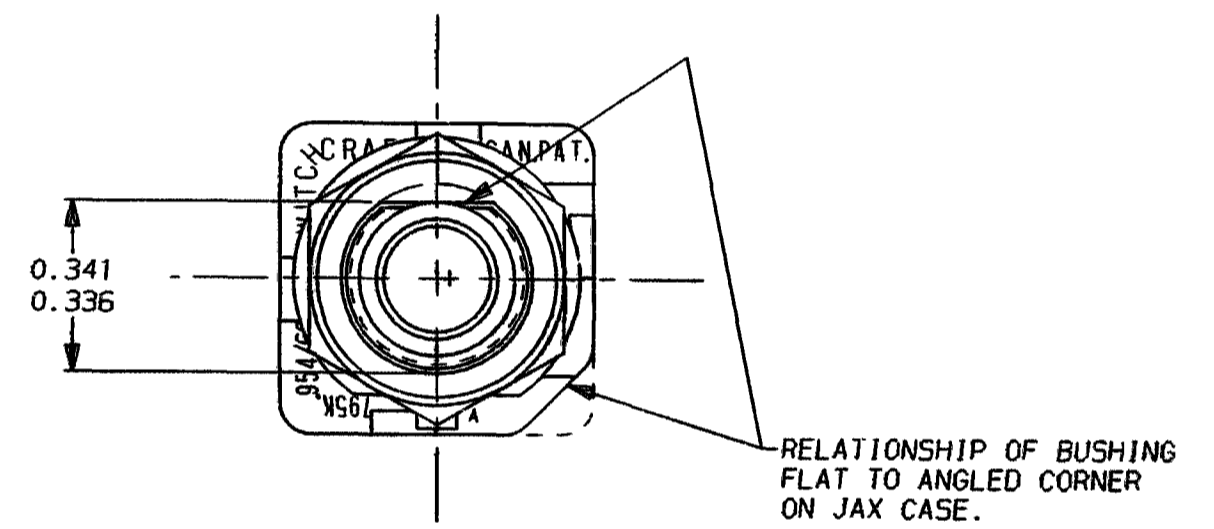
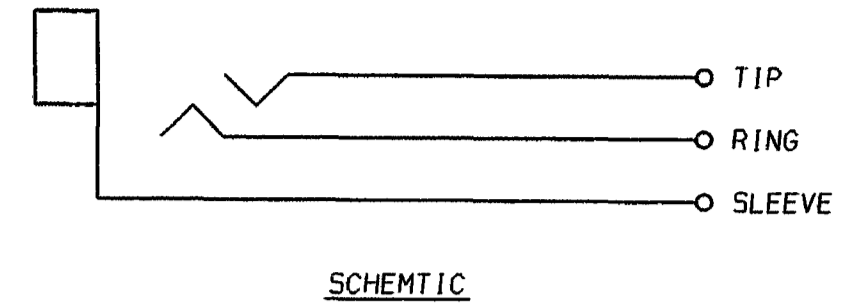
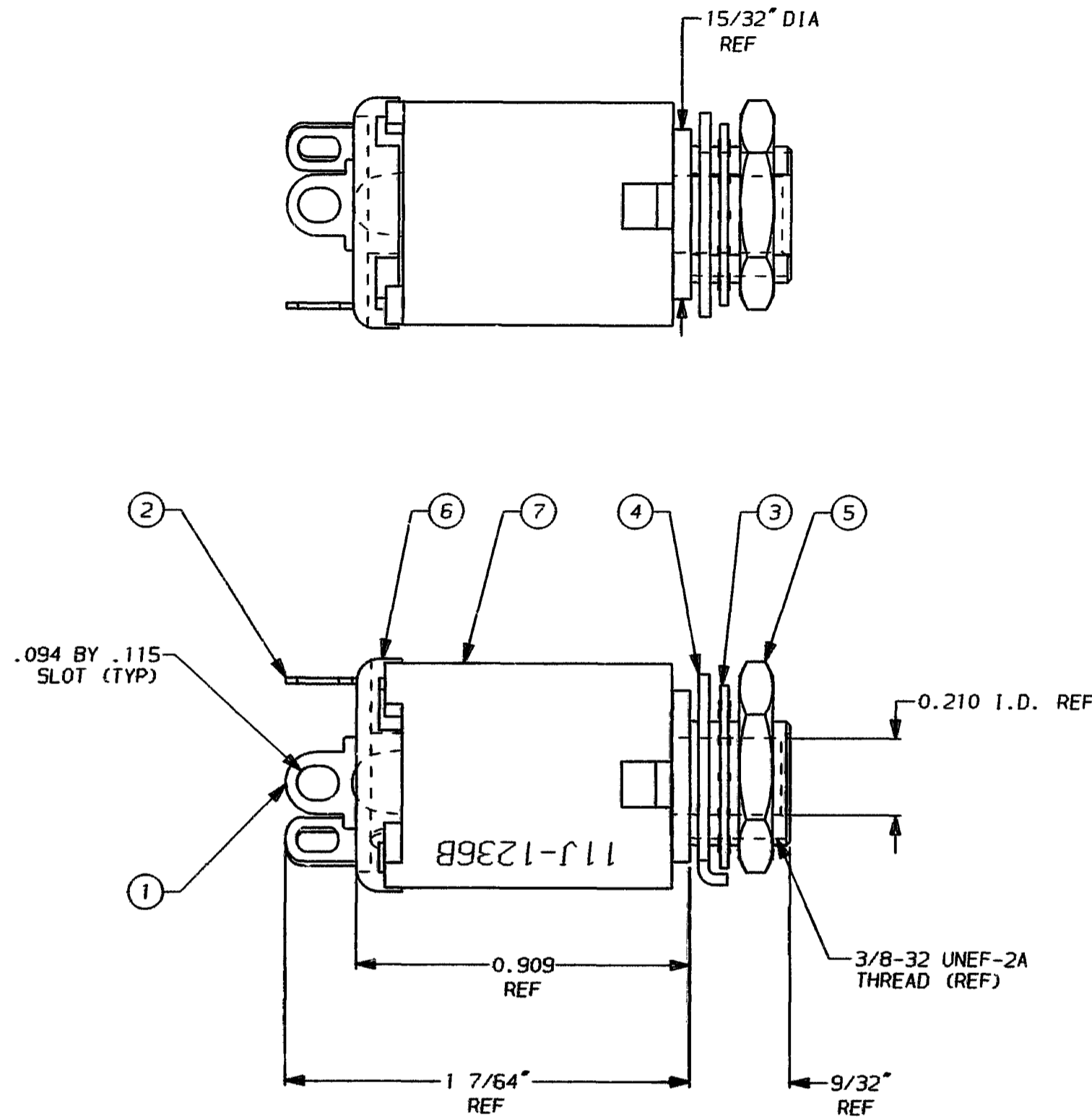
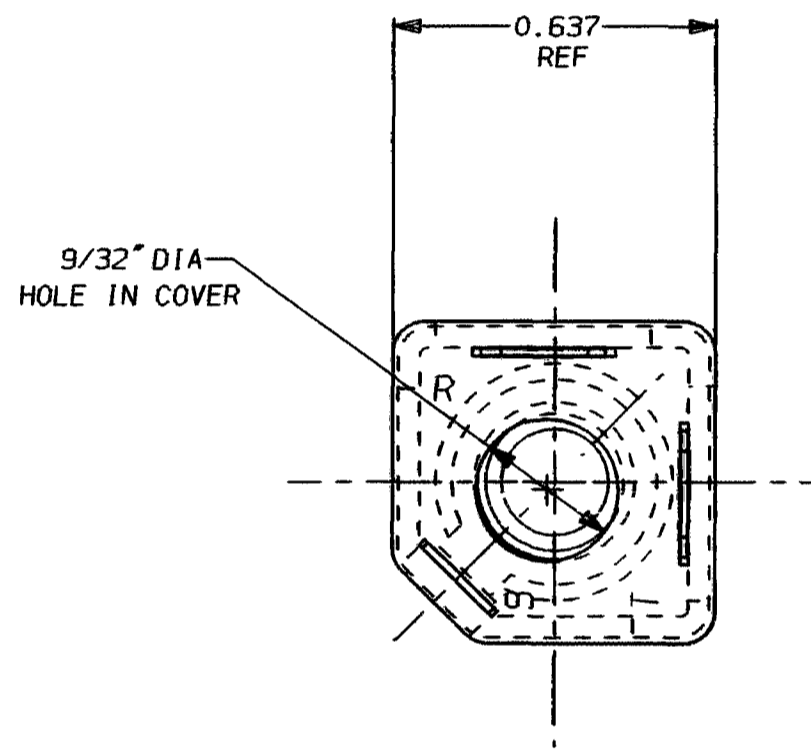


7	JAX CASE ASSEMBLY	1
6	COVER	1
5	HEX NUT	1
4	LOCKRING	1
3	LOCKWASHER	1
2	RING SPRING	1
1	TIP SPRING	1
ITEM	DESCRIPTION	REQ'D
STOCK LIST		



MATERIAL LIST

BUSHING: CABRA ALLOY NUMBER 360 BRASS HALF HARD (APPLICABLE MIL SPEC QQ-B-626 COMP.22) BRIGHT NICKEL PLATED .0001 MIN. (APPLICABLE MIL F-14072 QQ-N-290 CLASS I, TYPE VII)

HOUSING: WELLMAN, INC. WELL-SPHERE FR6S25-66, GLASS REINFORCED TYPE 6/6 NYLON OR EQUIVALENT.

TIP AND RING SPRING: .016 THICK NICKEL SILVER (APPLICABLE MIL SPEC QQ-C-585-COMP.2) GOLD PLATED .00002 MIN. (APPLICABLE MIL SPEC MIL-G-45204, TYPE II GRADE C, CLASS 00.

SLEEVE TERMINAL: COLD ROLLED STEEL (APPLICABLE MIL SPEC ASTM-A-109-65 QQ-S-698) ELECTRO TIN 0.0001-0.00025 THICK (APPLICABLE MIL SPEC MIL-T-10727A, TYPE I.

COVER: SAME AS HOUSING.

HEX NUT: BRASS 1/2 INCH ACROSS FLATS X 3/32 THICK NICKEL PLATED 0.0001 MIN. (APPLICABLE MIL SPEC MIL-F-14072 QQ-N-290, CLASS I, TYPE VII.)

INTERNAL TOOTH LOCKWASHER: COLD ROLLED STEEL (APPLICABLE MIL SPEC ASTM A-109-65 QQ-S-698) NICKEL PLATED .0002 MIN. (APPLICABLE MIL SPEC QQ-N-290, CLASS I, TYPE IV QS.

LOCKRING: COLD ROLLED STEEL .030 THICK (APPLICABLE MIL SPEC ASTM A-109-72 QQ-S-698) NICKEL PLATED .0004 MIN. (APPLICABLE MIL SPEC QQ-N-290, CLASS I, TYPE III (KS)

NOTES:

- MAX. WEIGHT INCLUDING HARDWARE 12 GRAMS.
- HEX NUT, LOCKWASHER AND LOCKRING SUPPLIED WITH JACK, ASSEMBLED.
- JACK IS DESIGNED TO MATE WITH SWITCHCRAFT® NUMBER 480 (PJ-068) OR NUMBER 484 (PJ-309) PLUGS.

REVISIONS		STAR SYMBOL DENOTES CRITICAL DIMENSION, SEE S/C ENGINEERING STANDARD ES-0001		THIS DRAWING DESCRIBES A DESIGN CONSIDERED PROPRIETARY IN NATURE, DEVELOPED AND MANUFACTURED BY SWITCHCRAFT INC. AND IS RELEASED ON A CONFIDENTIAL BASIS FOR IDENTIFICATION PURPOSE ONLY.																																																	
ISSUE	CHANGE NO.	DATE	BY	APP'D	DO NOT SCALE DRAWING																																																
A		10-1-91	ES	EBR																																																	
<table border="1"> <tr> <td>FINISH</td> <td>SIZE</td> <td>WIDTH</td> <td>MULT</td> <td>MATERIAL</td> <td>TEMPER</td> </tr> <tr> <td>SPEC. NO.</td> <td></td> <td></td> <td></td> <td></td> <td></td> </tr> <tr> <td>FIRST USED ON</td> <td colspan="2">SCALE</td> <td colspan="3">1 = 0.375</td> </tr> <tr> <td>DATE DRAWN</td> <td>BY</td> <td>CHK'D</td> <td>APP'D</td> <td colspan="2">MATERIAL SPEC. NO.</td> </tr> <tr> <td>6-22-77</td> <td>CJ</td> <td>TN</td> <td>JK</td> <td colspan="2"></td> </tr> <tr> <td colspan="3">NAME</td> <td colspan="3">PART NO.</td> </tr> <tr> <td colspan="3">HI-D-JAX AND COVER ASSEMBLY</td> <td colspan="3">11J1236B</td> </tr> <tr> <td colspan="3">ISSUE</td> <td colspan="3">A</td> </tr> </table>						FINISH	SIZE	WIDTH	MULT	MATERIAL	TEMPER	SPEC. NO.						FIRST USED ON	SCALE		1 = 0.375			DATE DRAWN	BY	CHK'D	APP'D	MATERIAL SPEC. NO.		6-22-77	CJ	TN	JK			NAME			PART NO.			HI-D-JAX AND COVER ASSEMBLY			11J1236B			ISSUE			A		
FINISH	SIZE	WIDTH	MULT	MATERIAL	TEMPER																																																
SPEC. NO.																																																					
FIRST USED ON	SCALE		1 = 0.375																																																		
DATE DRAWN	BY	CHK'D	APP'D	MATERIAL SPEC. NO.																																																	
6-22-77	CJ	TN	JK																																																		
NAME			PART NO.																																																		
HI-D-JAX AND COVER ASSEMBLY			11J1236B																																																		
ISSUE			A																																																		

CUSTOMER DWG
CAD/CAM DWG. NO.
11J1236.CD
SHEET 1 OF 1

Switchcraft®

