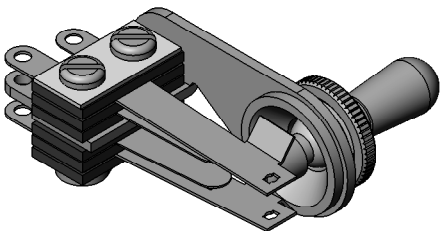
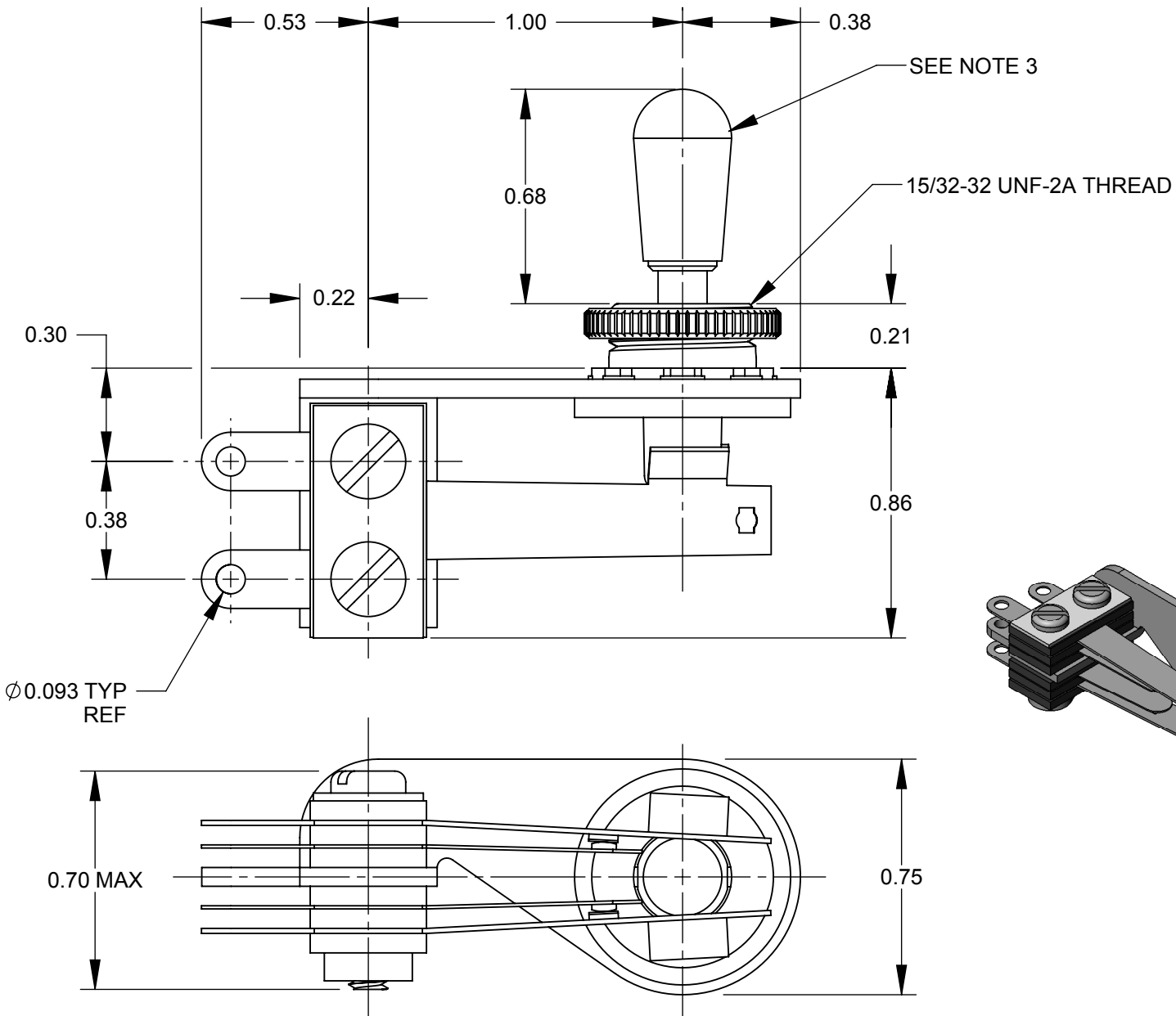
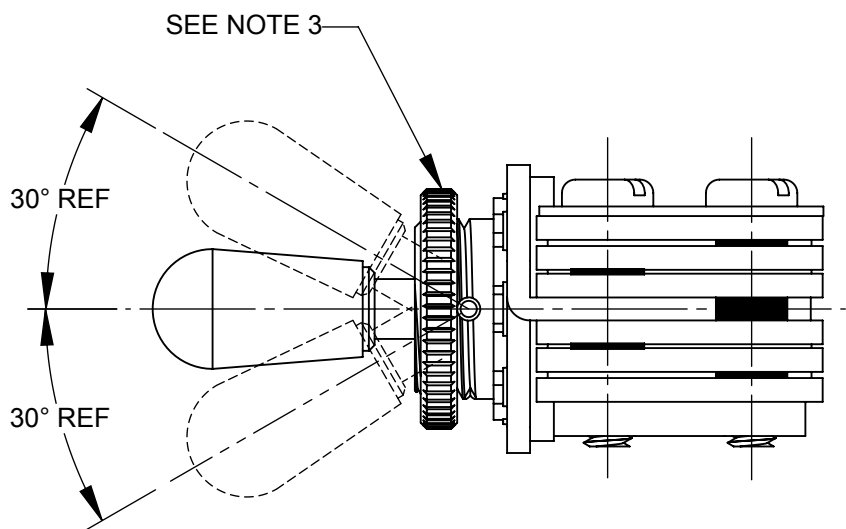




SCHEMATIC



NOTES:

- MATERIALS:
FRAME - STEEL, NICKEL PLATED
SPRINGS - SPRING TEMPERED, NICKEL SILVER
BUSHING & SHAFT - BRASS, NICKEL PLATED
INSULATION - PHENOLIC
CONTACTS - FINE SILVER
SCREWS - STEEL, NICKEL PLATED
SHAFT INSULATOR - NYLON
TUBING - THERMOPLASTIC
HARDWARE:
KNOB - THERMOPLASTIC, LIGHT IVORY
NUT - BRASS, NICKEL PLATED
- ELECTRICAL CHARACTERISTICS:
- CONTACT RESISTANCE: 20 MILLIOHMS MAX
- CONTACT RATING: 3A, 300W MAX AC NON-INDUCTIVE LOAD
- LEAKAGE RESISTANCE: 1000 MEGAOHMS OR GREATER
- DIELECTRIC STRENGTH: 250 VDC
- KNURLED NUT AND KNOB SHIPPED UNASSEMBLED.
- THIS PRODUCT IS RoHS COMPLIANT.

CUSTOMER DRAWING

						THIS DRAWING DESCRIBES A DESIGN CONSIDERED PROPRIETARY IN NATURE, DEVELOPED AND MANUFACTURED BY SWITCHCRAFT INC. AND IS RELEASED ON A CONFIDENTIAL BASIS FOR IDENTIFICATION PURPOSES ONLY.										
					UNLESS OTHERWISE SPECIFIED 1. ALL DIMENSIONS IN INCHES - TWO PLACE DECIMALS ±0.02 - THREE PLACE DECIMALS ±0.005	SIZE	WIDTH		MULT		LBS/M		TEMPER			
						FINISH SPEC No.					MATERIAL SPEC No.					
						FIRST USED ON			SCALE 2:1		Switchcraft®					
						DATE DRAWN 3/3/10	BY RS	CHKD RS 3/3/10	APVD TJK 8/2/11							
A	25275	1/27/06	RS	TJK		NAME					PART No.					REV
REV	ECO NUMBER	DATE	BY	APVD		12000 SERIES RIGHT-ANGLE LEVER SWITCH, 3 POSITION LOCKING, RoHS					6S1456X					A
REVISIONS					DO NOT SCALE DRAWING											