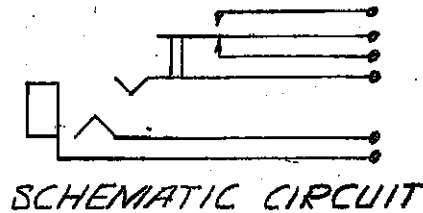


5/8 O.D. WASHER
STEEL, NICKEL PLATED

3/8 - 32 THREAD

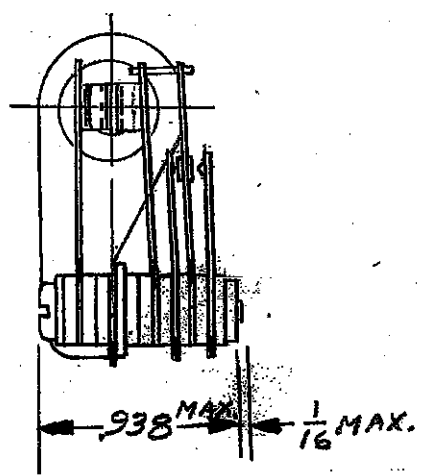
1/4 DIA.
1/2 HEX LOCKNUT
BRASS, NICKEL PLATED.



NOTES:

- MATERIALS:
 FRAME - STEEL, CADMIUM PLATED
 BUSHING - BRASS, NICKEL PLATED
 SPRING - NICKEL SILVER, SPRING TEMPER
 CONTACTS - FINE SILVER
 SPACERS - PHENOLIC
 TERMINALS - HOT SOLDER DIPPED LEAD FREE
 TWIN NUT & SCREWS - STEEL, CADMIUM PLATED

2. ALL DIMENSIONS SHOWN ARE FOR REFERENCE ONLY.



CUSTOMER DRAWING

ISS	SYM	REVISION	BY	DATE
A		27267	TO	2-19-14

THIS DRAWING DESCRIBES A DESIGN CONSIDERED PROPRIETARY IN NATURE, DEVELOPED AND MANUFACTURED BY SWITCHCRAFT, INC., AND IS RELEASED ON A CONFIDENTIAL BASIS FOR IDENTIFICATION PURPOSE ONLY.

UNLESS OTHERWISE SPECIFIED:

- DECIMAL DIMENSIONS ± .005
- FRACTIONAL DIMENSIONS ± 1/64
- ANGLES ± 1/2°
- ALL DIA'S CONCENTRIC WITHIN .002 T.I.R.
- ALL DIMENSIONS IN INCHES
- FOR THREADS USE UNIFIED PLUS AND RING GAGES ONLY.
- REMOVE ALL BURRS.
- PART TO BE FABRICATED AS SPECIFIED. MAKE NO DIMENSIONAL ALLOWANCES FOR APPLIED FINISHES, I.E., PLATING, PAINTING, ETC.
- HOLES ON SAME CENTERLINE MUST BE ALIGNED WITHIN ±.002

DO NOT SCALE DRAWING

DRAWN BY TO	DATE 4-3-14	FINISH
CHECKED BY TO	DATE 4-3-14	PER FINISH SPEC. NO.
APPROVED BY <i>[Signature]</i>	DATE 4-3-14	MATERIAL
SCALE FULL	FIRST USED ON	PER MAT. SPEC. NO.
NAME SF JAX	PART NO. C55BZ	ISSUE A
SHEET		OF 1