

6

5

4

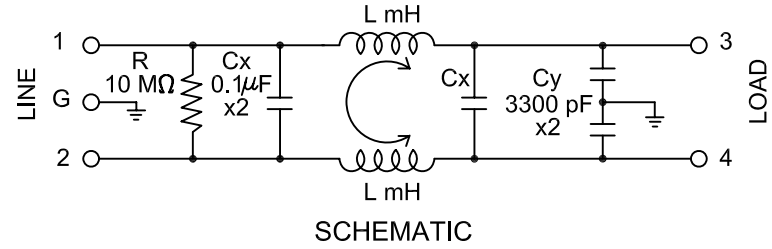
3

2

1

ELECTRICAL SPECIFICATIONS:

Current rating: (see chart)  
 Voltage rating: 125/250 VAC  
 Operating frequency: 50/60 Hz  
 Leakage current: 0.8mA max. @ 250 VAC 50 Hz  
 Hipot rating: (for one minute)  
 Line to line: 1450 VDC  
 Line to ground: 1800 VAC  
 Insulation resistance: 100 Mohm min. @ 250 VDC



Direct current resistance:

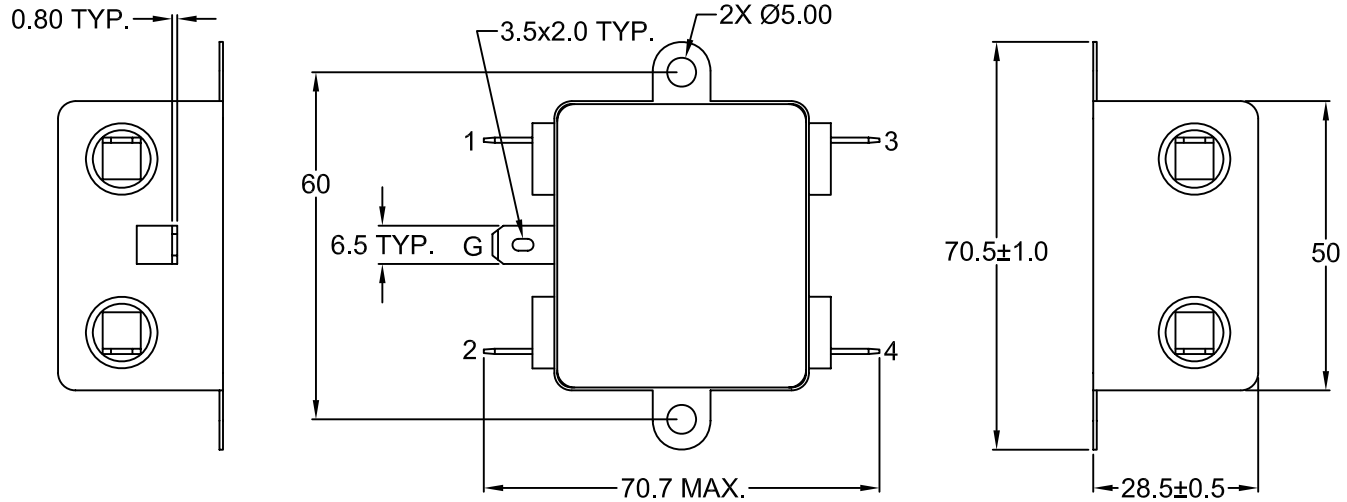
	5	10	15	20	CURRENT (A)
	0.3 max.	0.15 max.	0.1 max.	0.05 max.	RESISTANCE (ohm)

Operating temperature range: -25°C to +85°C

APPROVALS:



RoHS  
COMPLIANT



REV	DATE	CHANGE	CHNG		CHK		APPR	
			PB	GO	PB	GO	JJ	TD
A	4/10/00	REVISED / REDRAWN						
B	01/08/02	REVISED / REDRAWN						

PART NUMBER	CURRENT RATING	L (mH)
PC05F	5 AMP	2 x 1.7
PC10F	10 AMP	2 x 1.2
PC15F	15 AMP	2 x 0.9
PC20F	20 AMP	2 x 0.5

TOLERANCE UNLESS OTHERWISE SPECIFIED	
X	± 1
X.X	± 0.4
X.XX	± 0.20

DRAWN BY	AH	DATE:	9/26/96
CHECK BY	SS	DATE:	11/13/98
APPR BY	LH	DATE:	11/13/98

**Power Dynamics, Inc.**  
 Phone: 973 560-0019 Whippany, New Jersey Fax: 973 560-0076

PART: ONE STAGE EMI/RMI MODULE FILTER 5, 10, 15, & 20A QC TERMINAL

**PCXXF**

PART #: **PCXXF**

SIZE: A

SCALE: NTS

ALL DIMENSIONS FOR REFERENCE ONLY  
 DIMENSIONS ARE IN MILLIMETERS

SHEET 1 of 2

REV: B

6

5

4

3

2

1

D

C

B

A

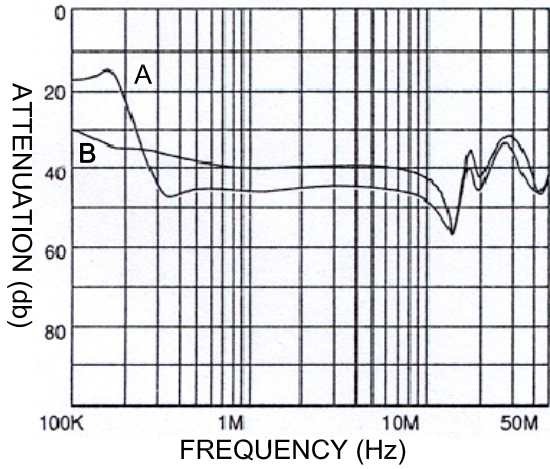
D

C

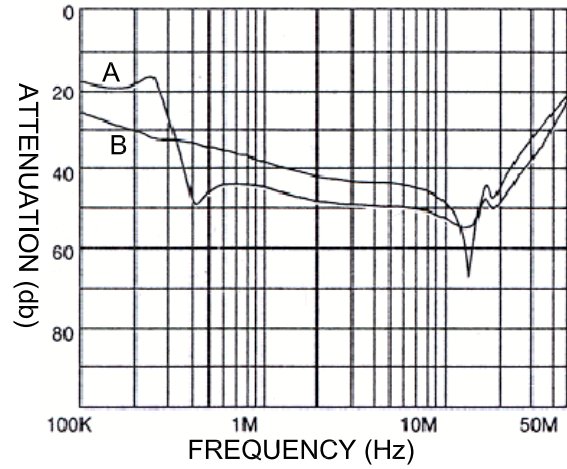
B

A

PC05F

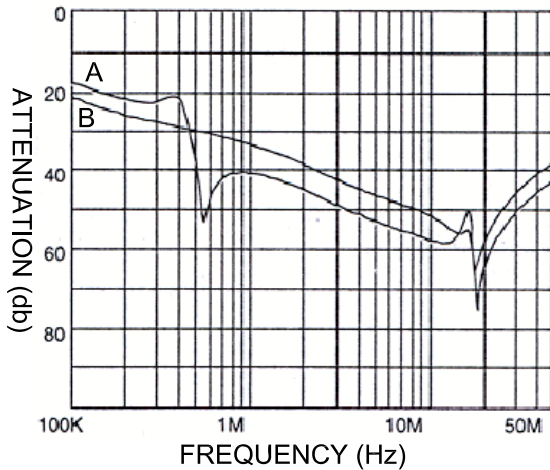


PC10F

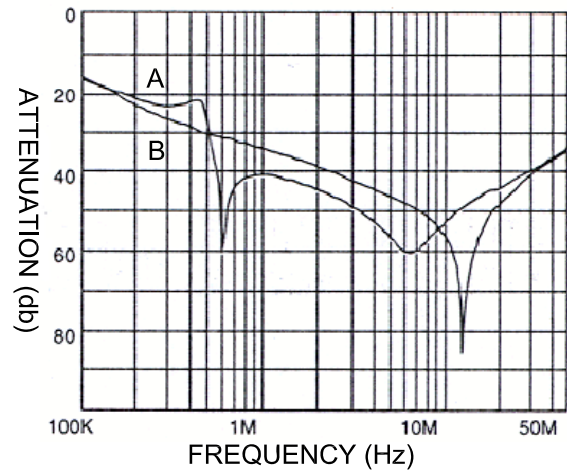


A - NORMAL MODE  
B - COMMON MODE

PC15F



PC20F



REVISIONS  
SEE SHT 1 FOR LATEST REVISION

TOLERANCE UNLESS OTHERWISE SPECIFIED	
X	± 1
X.X	± 0.4
X.XX	± 0.20
DRAWN BY: AH	DATE: 9/29/98
CHECK BY: SS	DATE: 11/13/98
APPR BY: LH	DATE: 11/13/98

**Power Dynamics, Inc.**  
Phone: 973 560-0019 Whippany, New Jersey Fax: 973 560-0076

PART: ONE STAGE EMI/RFI MODULE FILTER 5, 10  
15, & 20A, QC TERMINALS

PART #: <b>PCXXF</b>		SHEET 2 of 2
SIZE: A	ALL DIMENSIONS FOR REFERENCE ONLY DIMENSIONS ARE IN MILLIMETERS	
SCALE: NTS		REV: <b>B</b>