

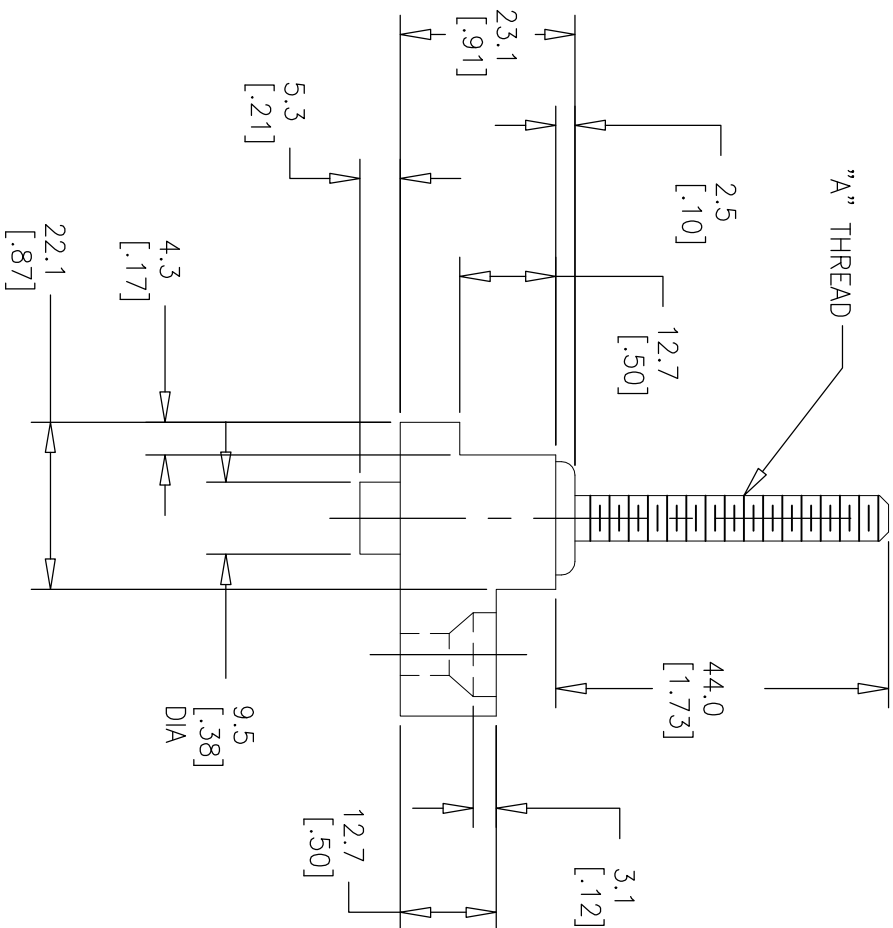
11.10  
[Ø.457]  
C,BORE X 3.1 [.12] DEEP  
WITH 82° C'SINK TO THRU-HOLE

07019-X

THREAD TYPE

6	=	M6	METRIC	THREAD
8	=	M8	METRIC	THREAD


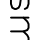
REV #	REVISIONS	DATE	APPR.
X1	RELEASED FOR CUSTOMER APPROVAL UF	6-4 1999	
X2	DWG. C7019-X-SALES WAS C7019-SALES. C7019-6 WAS C7019. ADDED C7019-8. UF	9-17 1999	
X3	(B5) 44.0 WAS 35.0 (A4) DELETED NOTE 3; ADDED YELLOW DICHROMATE TO NOTE 2 (C3) ADDED TORQUE VALUES TO TABLE. UF	9-30 1999	
0	RELEASE FINAL SALES DRAWING ECN D8632 UF	11-12 1999	



PART NUMBER	"A" THREAD	TORQUE
C7019-6	M6	6.2 N-m [55 in-lb]
C7019-8	M8	11.3 N-m [100 in-lb]

NOTES:

1. BLOCK MATERIAL: PHENOLIC, UL RECOGNIZED TO 94V-0 TO 94V-1 RATING WITH 150°C TEMPERATURE RATING.
2. STUD MATERIAL: ZINC (W/ YELLOW DICHROMATE) PLATED STEEL.

TOLERANCES UNLESS OTHERWISE SPECIFIED		THIRD ANGLE PROJECTION	
METRIC TOL			
1 PL DEC.=±.25 2 PL DEC.=±.13	2 PL DEC.=±.01 3 PL DEC.=±.005	ANGULAR TOL= ±2° FRACTION TOL= ± 1/64 IN	
<b>COPYRIGHT—Cooper Industries, Inc.</b> This is an unpublished work. The disclosure of this work is limited to a select personnel. Further dissemination or disclosure to the public is PROHIBITED. This unpublished work is protected by Federal Copyright law and all rights thereunder are reserved by Cooper Industries, Inc.			
<b>CONFIDENTIAL</b> — The information contained in this document is the property of Cooper Industries, Inc. It is not for public disclosure. Possession of the information does not convey any right to loan, sell or disclose the information. Unauthorized reproduction or use of the information is prohibited. This document is to be returned to Cooper Industries, Inc. upon completion of the purposes for which it is loaned or upon request.			
MATERIAL			
SEE NOTES		USED ON	
FINISH			
SEE NOTES			
 <b>Cooper</b> Bussmann Circuit Components 7300 W. Wilson Ave. Chicago, IL 60656			
TITLE METRIC JUNCTION BLOCK — M6 OR M8 THREAD X 35mm LONG STUD			
DRAWN BY	ENG. / APPR.	DATE	SCALE
UF	UFHEIL	6/4/99	1:1
PART NO.			
C7019-X-SALES			
SHEET 1	OF 1		