

NOTES: (L)

1. CHANGE OF MATERIAL IS NOT PERMITTED UNLESS APPROVED IN WRITING BY OTTO ENGINEERING PERSONNEL.
2. DRAWING TO BE INTERPRETED IN ACCORDANCE WITH THE CURRENT REVISION OF ASME Y14.5M.
3. TSI TO BE INTERPRETED AS THEORETICAL SHARP INTERSECTION.
4. THIS PART/PRODUCT IS TO BE MANUFACTURED WITH THE APPLICABLE REGULATIONS OF EC DIRECTIVES 2002/95/EC AND 2002/96/EC, RESTRICTION OF THE USE OF HAZARDOUS SUBSTANCES IN ELECTRICAL AND ELECTRONIC EQUIPMENT (RoHS) AND WASTE ELECTRICAL AND ELECTRONIC EQUIPMENT (WEEE).
5. PARTS SHALL BE PACKAGED IN A MANNER TO PREVENT SCRATCHING, BOWING OR OTHER DAMAGE DURING SHIPMENT.
6. TERMINAL IDENTIFICATION ORIENTATION
7. D.C. 9401 EFFECTIVITY
8. EACH SWITCH TO BE BAGGED AND LABELED WITH APPROPRIATE FAA-PMA LABEL.

FAA-PMA APPROVED

CHARACTERISTICS

ELECTRICAL:

- STANDARD RATINGS AT 28 VDC & 115 VAC
- RESISTIVE: 10 AMPS
- INDUCTIVE: 5 AMPS
- LAMP: 3 AMPS
- ELECTRICAL LIFE: 100,000 CYCLES
- SIGNAL LEVEL RATING:
- RESISTIVE: 10-250 mA
- INDUCTIVE: 10-250 mA
- ELECTRICAL LIFE: 25,000 CYCLES

AGENCY: (L)

- UL RECOGNIZED COMPONENT
- UL 1500 IGNITION PROTECTED

MECHANICAL:

- TOTAL TRAVEL: .085 ± .015
- OVERTRAVEL: .012 MIN.
- OPERATING FORCE: 2.5^{+0.5} LBS.
- RESET FORCE: .75 LBS. MIN.
- MECHANICAL LIFE: 1,000,000 CYCLES

PHYSICAL:

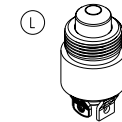
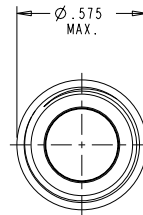
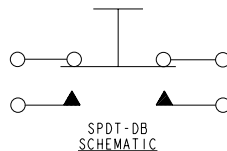
- TEMPERATURE RANGE: -55°C TO +85°C
- ENCLOSURE DESIGN:
- (2) DUSTTIGHT &
- (6) SPLASHPROOF
- PER MIL-S-8805
- BUTTON: BLACK THERMOPLASTIC
- CASE: CLEAR ANODIZED ALUMINUM ALLOY
- CONTACTS/TERMINALS: GOLD PLATED

MARKING: (L)

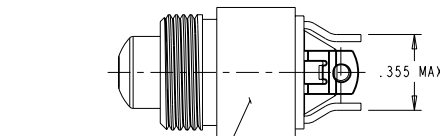
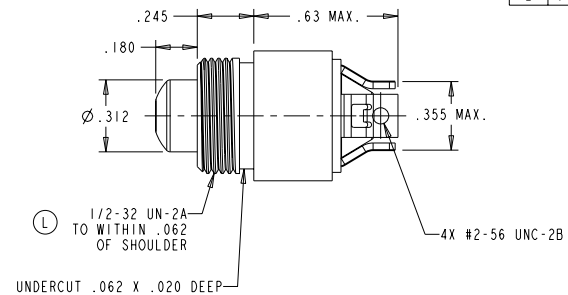
- OTTO, 21649
- P8-4000003
- FAA-PMA (A)
- TERM. IDENT.
- & DATE CODE (YYWW)

MOUNTING HARDWARE: (L)

- HEX NUT, LOCKWASHER, & FLATWASHER



SCALE 1:1



(L) MARKING AREA: TERM. IDENT. TO BE IN LINE W/TERM. IDENT. ON SWITCH BASE

(L)

FAA CONTROLLED DRAWING

NO CHANGES TO SPECIFICATIONS, PROCESSES, PROCEDURES, MATERIAL, DESIGN OR MANUFACTURING LOCATION WITHOUT PRIOR APPROVAL OF THE FAA

UNLESS OTHERWISE SPECIFIED: DIMENSIONS ARE IN INCHES. TOLERANCES: .XX ±.03 .XXX ±.010 ANGLES ±2° DO NOT SCALE	MANUFACTURING SPC	OTTO CARPENTERSVILLE, ILLINOIS USA	DESCRIPTION			
			P8, SPDT-DB PUSHBUTTON SWITCH W/MODIFIED TERMINAL SPACING			
THIS DOCUMENT IS THE CONFIDENTIAL PROPERTY OF OTTO ENGINEERING, INC.. IT IS NOT TO BE USED IN ANY WAY DETRIMENTAL TO THE INTERESTS OF OTTO ENGINEERING, INC..		DRWN. JFC CHKD. JFC APPD. RTK	SIZE B	FSCM NO 21649	DRAWING NO. P8-4000003	REV. L
		WT.	THIRD ANGLE PROJECTION	Scale 2:1	Sheet 1 OF 1	

P8-4000003

REV	OCN #	DATE	APR
A	931121	07 APR 93	MJC
B	932300	07 JUN 93	ES
C	933610	09 SEP 93	MGC
D	933921	02 NOV 93	HR
E	962547	24 JUN 96	TO
F	963932	15 OCT 96	RG
G	970407	27 JAN 97	RE
H	973434	15 SEP 97	MJS
J	980605	03 FEB 98	MB
K	004427	20 MAER 00	ASC
L	040907	10 JAN 08	REO